

Certificate Expiration 7 July 2009

SAP BPC 4.2

SAP BPC 5.1

SAP BPC 7.0 for MS platform

OPALWAVE
better performance management

Introduction

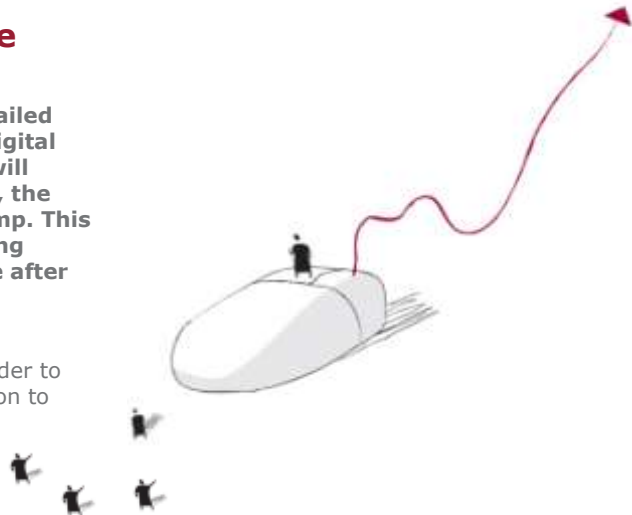
OPAL WAVE is a specialist in SAP BPC Technology. Our goal is to provide better performance management, where the solution provided is aligned with the client's business objectives, responsive to the needs of all its users, and adaptable to changing business circumstances.

The company supports clients throughout the life of their performance management system, guiding them in the creation of the correct performance management strategy, implementing the software solution, training users, and providing post-implementation hosting and support. All Opal Wave's projects are managed and staffed by people with many years experience in this field.

Digital Certificates Issue

The SAP BPC and CPM products detailed below have an issue whereby the digital certificate used to sign client files will expire on 7th August 2009. Further, the certificate does not have a timestamp. This may result in customers experiencing issues when accessing the software after this date.

This document has been prepared in-order to give guidance to help minimise disruption to users due to this issue.



Products affected

The following SAP CPM/BPC products are affected:

- SAP CPM 4.2 SP05 (SAP Note 1334285).
- SAP BPC 5.1 SP07 (SAP Note 1334241).
- SAP BPC 5.1 SP08 (SAP Note 1334284).
- SAP BPC 7.0 SP03 (SAP Note 1334212).

Earlier version of products may also be affected.

Impact

If you are running one of the affected products, you may experience problems using the software beyond the certificate expiration date.

Microsoft Office Security Settings determine what will happen when an expired certificate is encountered. If the Security settings within Excel are set to a highly restrictive level, then software

using expired certificates is disabled and cannot be used.

In order that the software can still be used post certificate expiration date, the software must either be upgraded to one using a newer certificate, or alternatively temporary workaround put in place until the software can be upgraded.

Upgrade

The following upgrade paths are available for clients on affected software:

Version	SP	Minimum Upgrade	Notes
CPM 4.2	Pre SP05	CPM 4.2 SP06	BPC 7 SP04 is recommended
	SP05	QFE1 for SP05	BPC 7 SP04 is recommended
[NOTE: CPM 4.2 will no longer be supported after March 2010]			
BPC 5.1	Pre SP07	BPC 5.1 SP09	BPC 7 SP04 is recommended
	SP07	Patch 03 for SP07	BPC 7 SP04 is recommended
	SP08	Patch 02 for SP08	BPC 7 SP04 is recommended
[NOTE: BPC 5.1 will no longer be supported by SAP after March 2010]			
BPC 7.0	Pre SP03	BPC 7.0 SP04	
	SP03	Patch 02 for SP03	BPC 7 SP04 is recommended

To ensure the long term stability and access to support for your SAP BPC installation, it is recommended that all users upgrade to SAP BPC 7. At the publication date of this paper, Opal Wave remains the only organisation in the UK to have completed the upgrade of any users to SAP BPC v 7 from an earlier version.

Performing any of the above upgrades will require that the client software is rolled out to client desktop machines.

Workaround

If there is insufficient time for you to plan and rollout an upgrade to resolve the issue, then a temporary workaround is available.

The workaround requires that the security within Excel be altered. Instructions to do this are given in the Appendix at the end of this document.

Please be aware that altering security levels has implications and must only be performed if these are in line with your organisations IT policy guidelines.

Further information regarding security levels can be found at:

- Office 2003
<http://office.microsoft.com/en-us/ork2003/HA011403071033.aspx>
- Office 2007
<http://office.microsoft.com/en-gb/excel/HP100969191033.aspx>

Appendix A

This Appendix provides instructions on setting Security in Excel 2003 and Excel 2007 to work around the certificate expiration issue.

Excel 2003

Depending on your Security configuration and how you start the BPC application, BPC may fail to start or cause issues.

If Macro Security is set to **Very High**, you will encounter the following warning:

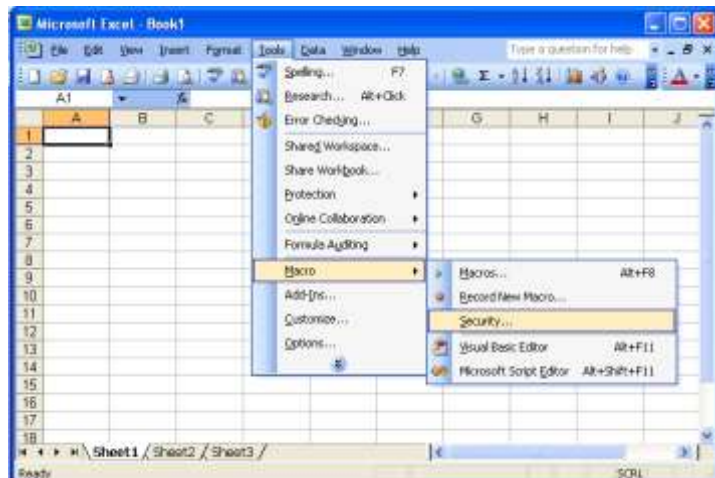


If Macro Security is set to **High**, you will encounter the following warnings:

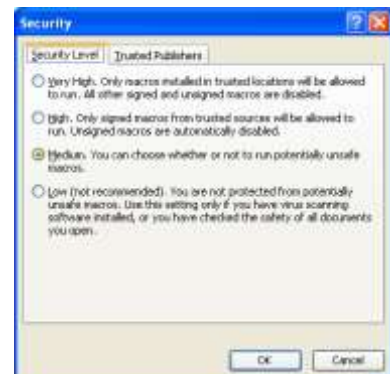


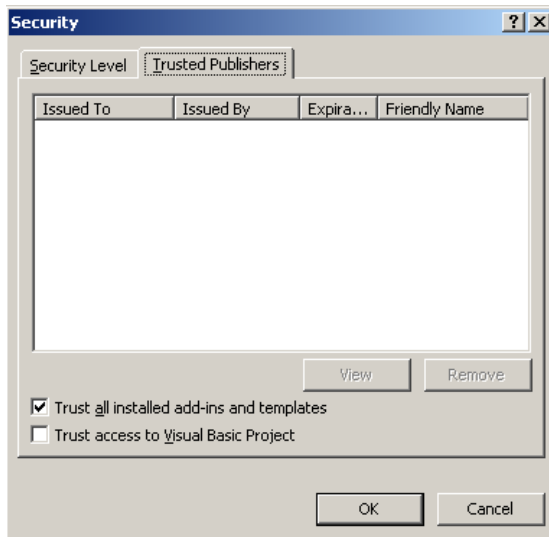
The following settings can be used on Excel 2003 in-order to work around the issue.

1. Start Microsoft Excel and Select the **Tools** -> **Macro** -> **Security** menu options.



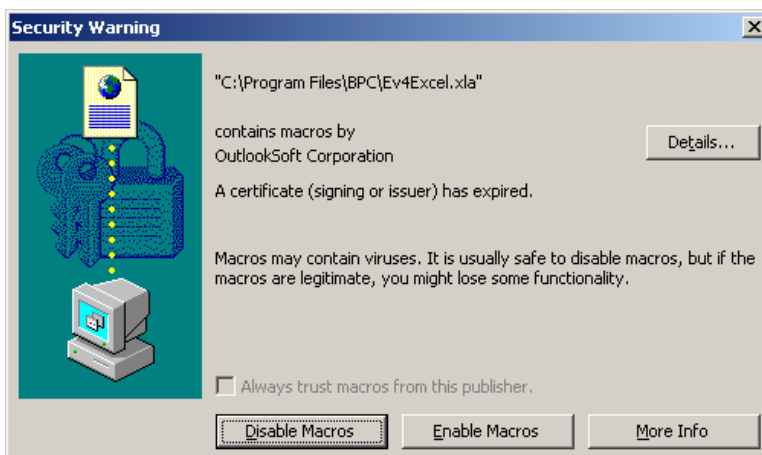
2. In the Security Level tab, select either the **Medium** or **Low (not recommended)** radio button.





3. On the **Trusted Publishers** tab, select the **Trust all installed add-ins and templates** check box.
4. Click **OK** button.
5. Exit Excel.

Please note that if you select the **Medium** option, users may be prompted to accept Macros that have expired.




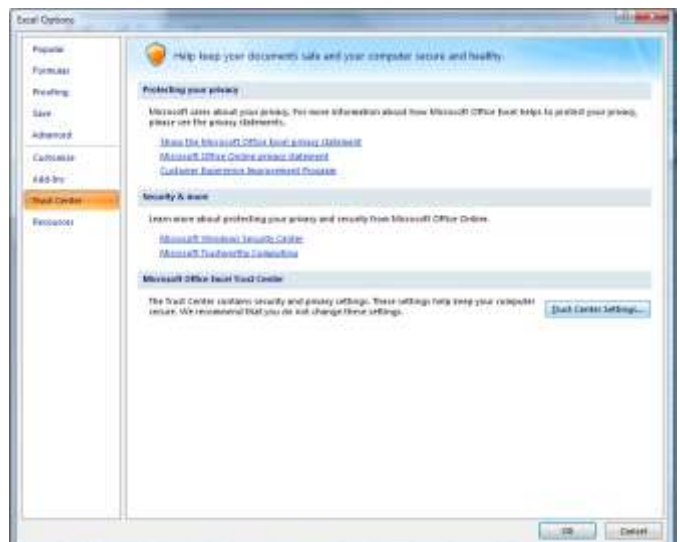
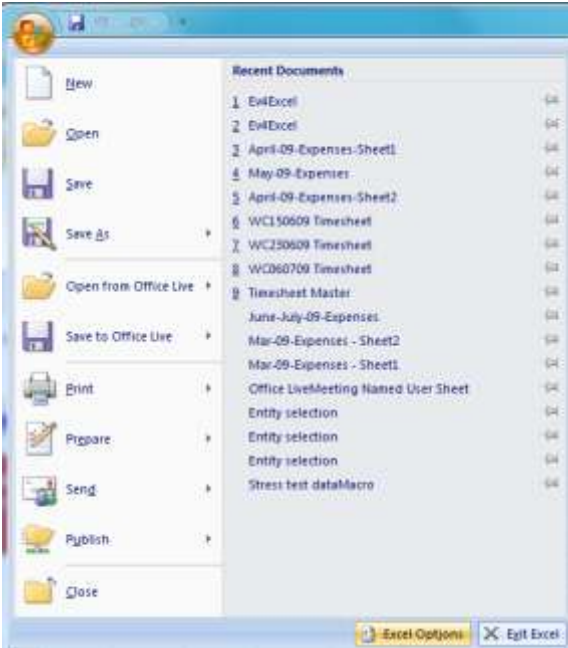
In order to prevent user from receiving the message to enable Macros, you can set the Macro Security Level to **Low (not recommended)** option but this is not very secure.

Excel 2007

Depending on your Security configuration and how you start the BPC application, BPC may fail to start or cause issues.

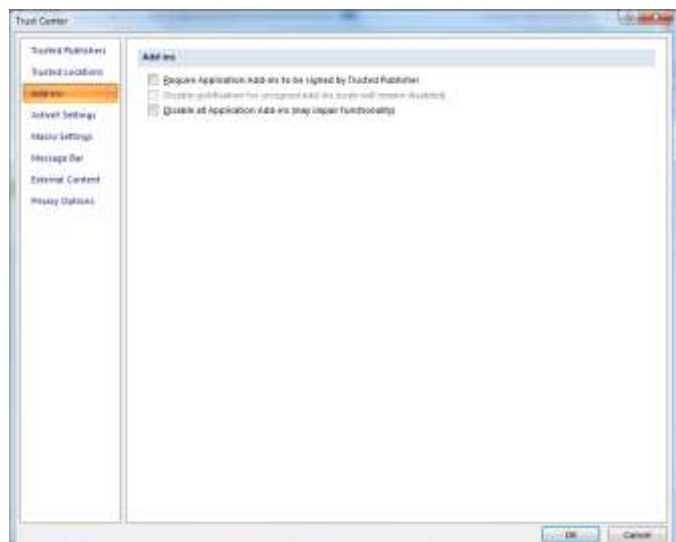
For Excel 2007, the following settings can be used in order to work around the issue:

1. From the main Excel menu, click the Microsoft  Office button and select **Excel Options**.

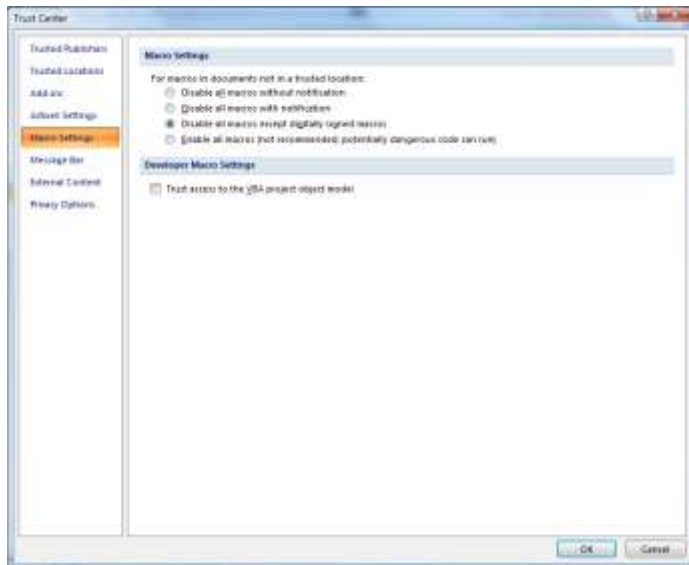


2. Select the **Trust Center** category, then click the **Trust Center Settings** button.

3. Select the **Add-ins** category and ensure none of the check boxes are ticked.



- Next, click the Macro Settings category and ensure either the **Disable all macros except digitally signed macros** or the **Enable all macros (not recommended; potentially dangerous code can run)** option is selected.



- Click **OK** button to return to the **Excel Options**, and then click **OK** button to return to Excel.


- Exit Excel.

Note that if you select the **Disable all macros except digitally signed macros** option, users may be prompted to accept Macros that have expired.

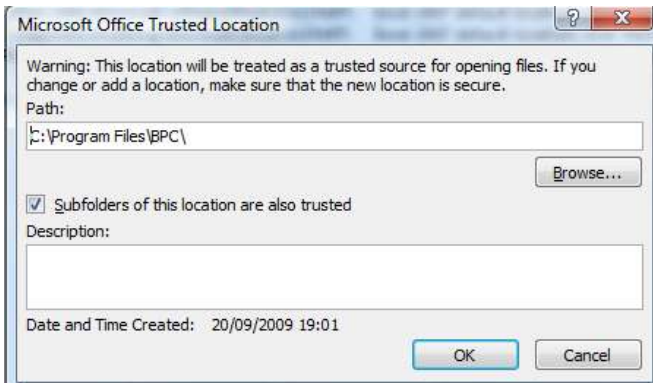
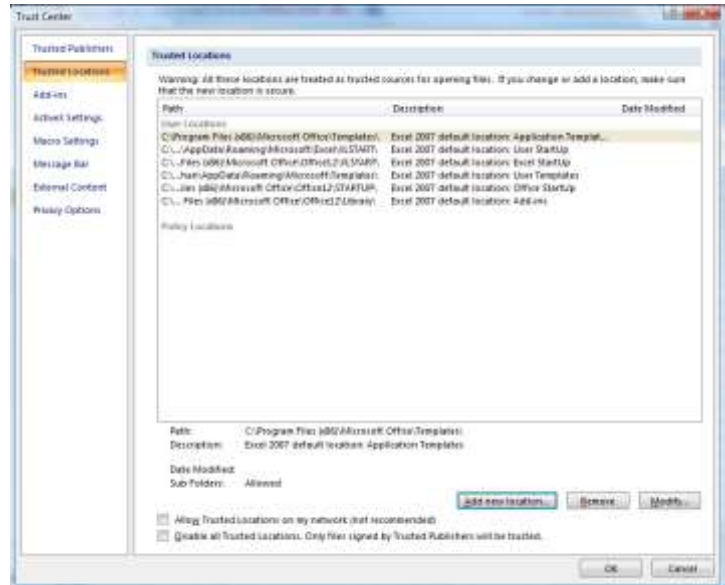


In order to prevent users from receiving the message to enable Macros, it is possible to set the Macro Settings to **Enable all macros (not recommended; potentially dangerous code can run)** option but this is not a secure option.

A better alternative is to add the location of the BPC installation to the Excel 2007 **Trusted Locations** which should ensure all BPC code is trusted.

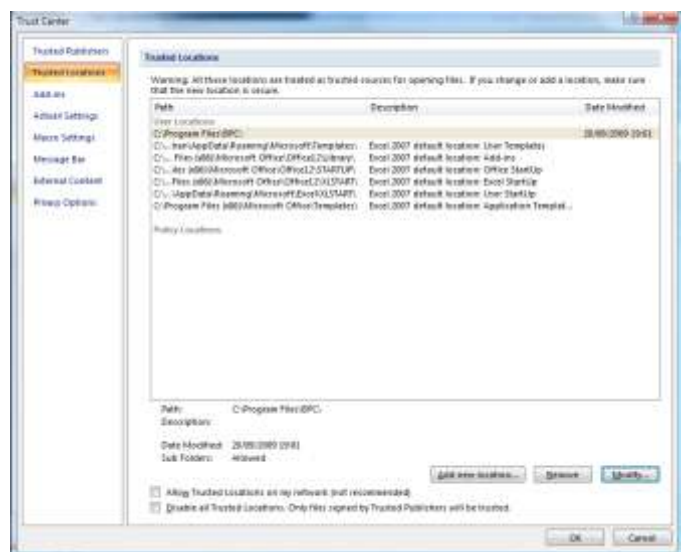
- Click the Microsoft Office  button and select **Excel Options**.
- In the **Trust Center** category, click the **Trust Center Settings** button.

3. Click the **Trusted Locations** category.



4. Click the **Add new location** button.
5. Click the **Browse** button and locate the installation folder for the BPC software on the client machine e.g. **C:\Program Files\BPC**. Click the **Subfolders of this location are also trusted** option and then click **OK** button.

6. The new trusted location should be shown in under **User Locations** list.
7. Click **OK** button to return to the **Excel Options**, and then click **OK** button to return to Excel.
8. Exit Excel.



Legal Disclaimer

This document has been prepared for guidance purposes only. This document is subject to change without notice. This document is provided for informational purposes only, without representation or warranty of any kind, and Opal Wave shall not be liable for errors or omissions with respect to the information contained in this document. The entire risk arising out of the use of this information remains with the recipient. The recipient should validate the information furnished and determine relevance to the recipients' operation/environment. In no event shall Opal Wave be liable for any direct, consequential, incidental, special, punitive, or other damages whatsoever (including, without limitation, damages for loss of business profits, business interruption, or loss of business information), even if Opal Wave has been advised of the possibility of such damages.

All documents and information remain the property of Opal Wave and should not be distributed or copied without the prior written permission of Opal Wave. All estimates and recommendations are for guidance purposes only. This document does not represent a formal offer or contract.

Copyright

All product and service names mentioned are the trademarks of their respective companies.

©Copyright 2009 Opal Wave Solutions Ltd. All rights reserved.



Opal Wave Solutions Ltd
4 Northlands
Wantage Road
Streatley-on-Thames
Berkshire
RG9 9LB

T: +44 (0)20 7117 8501
F: +44 (0)871 236 4259
E: info@opalwave.com
www.opalwave.com